

HDL-MTS57.1WI
S57 Multifunctional Touch Panel

Datasheet

Issued: May 26, 2021
File Edition: V1.0.4

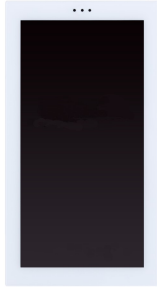


Figure 1. S57 Multifunctional Touch Panel

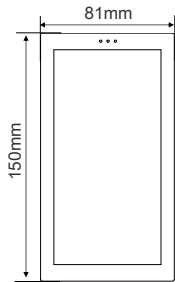


Figure 2. Dimensions - Front View

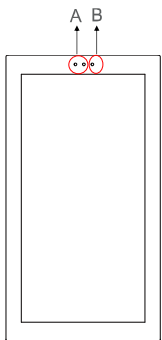


Figure 3. Components - Front View

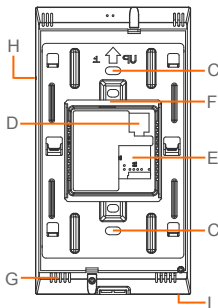


Figure 4. Components - Back View (with mounting bracket)

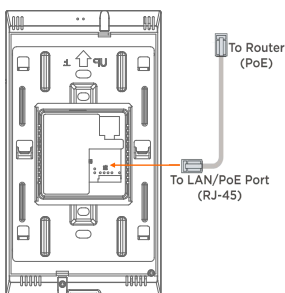


Figure 5. Ethernet Connection

Overview

S57 Multifunctional Touch Panel (See Figure 1), designed for smart home and building, is equipped with a 5.7" TFT display with 1280x640 resolution, supporting capacitive multi-touch. It also supports network connection via Ethernet, Wi-Fi and Bluetooth. With built-in light sensor, the display automatically regulates its brightness according to ambient light level to provide optimum visual effects. When the built-in proximity sensor detects gestures within 30cm, the display wakes up for control.

Specifications

- Built-in proximity sensor and light sensor.
- Supports network connections via Wi-Fi, Ethernet and Bluetooth.
- Micro 5PIN USB interface for data transmission.
- Android 6.0 operating system and pre-installed WallApp.
- Power supply by PoE (802.3 af/802.3 at complaint) or 24V DC.

Important Notes

- The touch panel should be installed in rectangle wall box with fixing holes 83mm apart.
- PoE is compliant with 802.3 af/802.3 at.

Product Information

Dimensions - See Figure 2

Components - See Figure 3 - 4

- A. Proximity sensor
- B. Light sensor
- C. Fixing holes 83mm apart
- D. 24V DC power connector
- E. LAN/PoE port
- F. Micro USB interface
- G. Speaker
- H. Reset button
- I. Microphone

Ethernet connection - See Figure 5

Safety Precautions

- The installation and testing for the product must be carried out by HDL Automation Co., Ltd. or its appointed service agencies. The electric construction shall comply with local laws and safety regulations.
- The device should be installed in a special-designed wall box. HDL will not be responsible for any consequence caused by the inexpert or faulty installation and wiring methods, which are not in accordance with the instructions contained in this operating instruction.
- Please do not privately disassemble or replace any parts of the product. Otherwise, it may cause mechanical fault, electric shock, fire or personal injuries.
- Please contact our after-sales departments or our designated service agencies for your maintenance service. Product failures caused by private disassembly are not subject to this warranty.

Package Contents

HDL-MTS57.1WI (With wall box) *1 / Mounting bracket*1 / Screw*2 / Power cable*1 / Datasheet*1

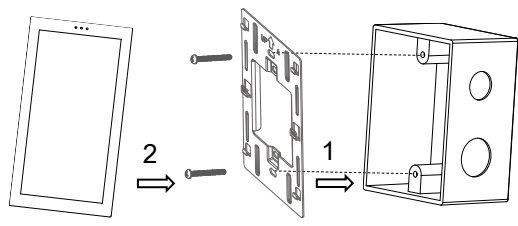


Figure 8. Panel
 Figure 7. Mounting bracket
 Figure 6. Wall box
 Figure 6 - 8. Installation

Technical Data

Basic Parameters

Power supply	24V DC, 0.5A or PoE
Chipset	Allwinner A64, 4 core A53
CPU	Quad_core 1.5G
RAM+ROM	2GB RAM+8GB ROM, DDR3
Touch screen	Capacitive screen
Screen dimensions	5.7 inches
Screen resolution	1280*640, 260ppi
Screen ratio	18:9
Operating system	Android 6.0
Micro USB interface	Used for data transmission
RJ45	LAN/PoE port, Self-Adaptive 10/100Mbps
Network connection	Wi-Fi, Ethernet and Bluetooth

External Environment

Working temperature	-5°C~45°C
Working relative humidity	≤85%
Storage temperature	-20°C~60°C
Storage relative humidity	≤93%

Specifications

Dimensions	150×81×13.5(mm) (The thickness does not include the bottom raised parts.)
Net weight	200g
Housing material	Glass, aluminum alloy, plastic
Installation	Wall box (See Figure 6 - 8) Wall box dimensions: 105×68mm Hole spacing: 77-88mm
Protection rating (Compliant with EN 60529)	IP20

Approved

CE

RoHS

Installation

Installation - See Figure 6 - 8

- Step 1. Install the wall box into the wall and fix it with screws.
- Step 2. Secure the mounting bracket to the wall box with screws.
- Step 3. Insert and fix the panel onto the mounting bracket.

Technical support

E-mail: hdtickets@hdlautomation.com
 Website: <https://www.hdlautomation.com>

©Copyright by HDL Automation Co., Ltd. All rights reserved.
 Specifications subject to change without notice.