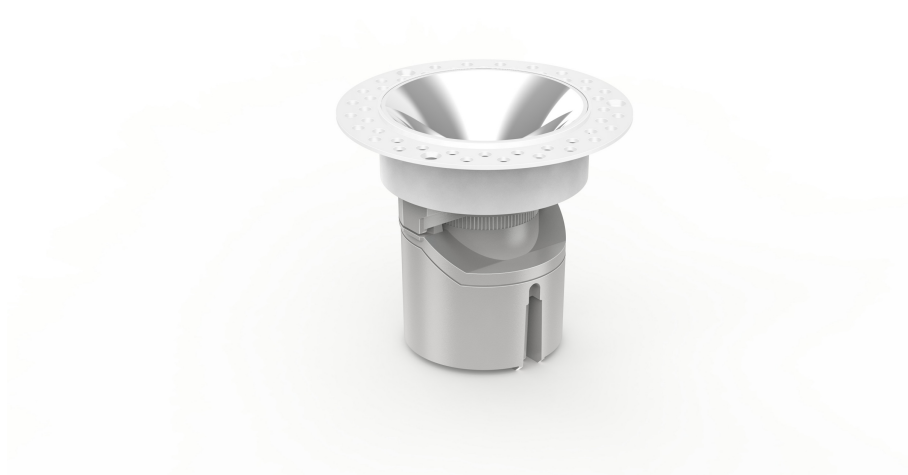


25W Pre Embedded Spotlight

Datasheet



HD-YM3095



Please scan the QR code above to check the latest version of datasheet!

Before using this product, please read this datasheet carefully and keep it properly!

Document Version: C

◆◆ Overview

25W Pre Embedded Spotlight is a flicker-free LED light with constant current. The housing material is aluminum alloy and has a novel structure.

Mainly suitable for indoor places such as hotels, luxury homes, clubs, model rooms, sales offices, museums, restaurants, shopping malls, shops, etc. that require special lighting.

Main functions:

- Round adjustable Pre-embedded Spotlight (95 Series) made of die-cast aluminum with white powder-coating finish (RAL 9016) and white/black/chrome reflector;
- Work with DALI/0-10V/TRIAC dimming driver or built-in ON/OFF driver;
- LED 25W;
- Measurement Ø130mm; ceiling cutout of Ø95mm with a narrow mounting trim;
- High color rendering at an index of CRI90;
- After a lifetime of 50000h min. 80% of the luminous flux;
- 3 years warranty;
- Adjustable CCT light: 24°/36° beam angles; fixed CCT light: 15°/24°/36°/50° beam angles;
- Lighting perfectly suitable for reading, writing as well as computer and control work according to DIN EN 12464-1(UGR<13);
- Degree of housing protection according to DIN EN 60529 (IP20).

Note: Please note that the pictures and illustrations provided in this instruction manual are for reference purposes only, and the actual product may differ.

◆◆ Appearance

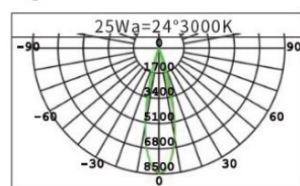


Figure 1

◆◆ Technical Data

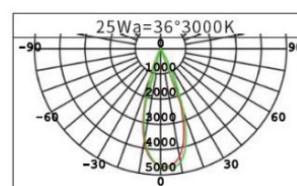
Item	Parameter
LED	
Adjustable color temperature	2800K-6000K
Fixed color temperature	2700K/3000K/3500K/4000K/5000K
CRI	>90
L80B10 lifetime	50,000h
SDCM	Without ON-OFF driver: 3; With ON-OFF driver: 2
Optics	
Adjustable CCT light beam angle	24°/36°
Fixed CCT light beam angle	15°/24°/36°/50°
UGR	< 13
System Output	1500lm
LED grid	Honeycomb mesh
Power supply parameters	
LED Driver	None/ON-OFF driver
LED Power	25W
Rated voltage	36V
Rated current	600mA

Light distribution



25W24°1666lm

Lux			
h(m)	d(m)	Em	E _{max}
1	0.44	5882	8470
2	0.88	1470	2118
3	1.33	653.5	941.1
4	1.77	367.6	529.4
5	2.22	235.3	338.8



25W36°1739lm

Lux			
h(m)	d(m)	Em	E _{max}
1	0.64	3326	4714
2	1.29	831.5	1178
3	1.94	369.5	523.7
4	2.59	207.9	294.6
5	3.24	133	188.5

Figure 2- Adjustable CCT Light - Light Distribution

Light distribution

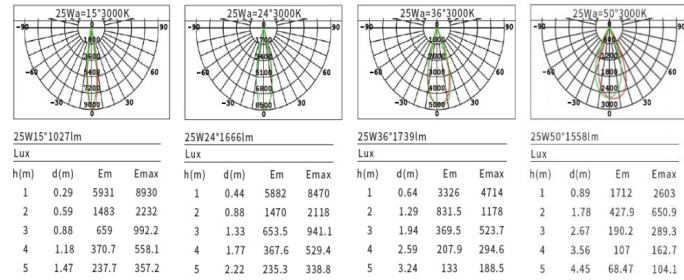


Figure 3- Fixed CCT Light - Light Distribution

Note: The technical data represent rated values for an ambient temperature of 25°C. The data values for the luminous flux are initially subject to a tolerance of +/- 10%, those for the electrical connected load are initially subject to a tolerance of +/- 10%, and those for the colour temperature are initially subject to a tolerance of +/- 150 K. No liability is assumed for typographical or printing errors.

◆◆ Specifications

Item	Parameter
Dimensions	Ø130mm
Cutout	Ø95mm
Height	135mm
Pivot	max. 30°
Rotation	355°
Installation site	Indoor
Light type	Spotlight
Installation	Pre-embedded
Version	Round
Housing	White
Reflector	White/black/chrome
IP degree (compliant with EN 60529)	IP20

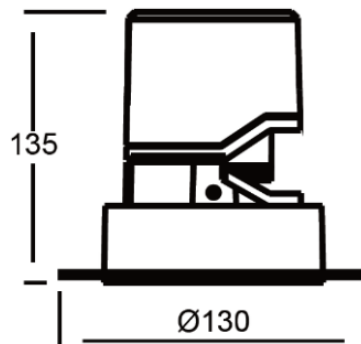


Figure 4

◆◆ Safety Precaution

Danger:

- Please do not privately disassemble or replace any parts of the product. Otherwise, it may cause mechanical fault, electric shock, fire or personal injuries.
- Under no circumstances should the product be covered by insulation pads or similar materials.

Warning:

- Installation and commissioning of this equipment must be carried out by us or by an organization appointed by us.
- The planning and construction of the electrical connection of this equipment must comply with the relevant local safety standards and regulations.
- Any consequences caused by failure to install and wire according to this instruction are not related to our company.
- Please refer all maintenance work to our after-sales department or designated organization, the warranty of this product does not apply to the failure caused by the user's disassembly of the product.

Caution:

- Before performing any installation or disassembly procedures, any maintenance or cleaning procedures on the device, it is crucial to disconnect the device from all voltage sources. This step is necessary to ensure the safety of the technician and prevent any potential damage to the device.
- Do not use corrosive liquid to wipe the device body, especially the interface, so to avoid damage to the device.
- Prior to performing maintenance or cleaning on the device, disconnect the device from all voltage sources, to avoid electric leakage and electric shock.
- After all of the cables are terminated, check for correct and good terminations.
- The matching between the driver and the light should be within the rated range and not beyond.

Note:

- The use of this product must not violate any safety regulations, and it must be 800mm away from the illuminated object.
- Ensure that this product is securely fastened to the surface of the installed object and not installed on ceilings that are easily damaged or deformed.
- In order to extend the service life and maintain the best lighting effect, it is recommended to regularly clean and maintain the product.

◆◆ Installation

Warning: Before performing any installation or disassembly procedures on the device, it is crucial to disconnect the device from all voltage sources. This step is necessary to ensure the safety of the technician and prevent any potential damage to the

device.

Standard: GB/T 17743-2021; GB 7000.1-2015; GB 7000.202-2008

The following is the installation for Pre-embedded Spotlight:

Step 1: Turn off the power. Before painting the ceiling, cut installation holes on the ceiling according to the opening dimension of the lighting fixtures (as shown in Figure 1);

Step 2: Fix the outer ring (embedded part) on the ceiling with self tapping screws to prevent the outer ring from loosening, cracking, and falling off after painting (see Figure 2 below);

Step 3: After the installation of the outer ring (embedded parts) is completed, paint the ceiling to make the outer ring invisible (see Figure 3 below);

Step 4: Remove the protective film from the lamp (see Figure 4 below);

Step 5: Before connecting the wires, ensure that the power is turned off and connect the mains power to the live wire and neutral wire input terminal. If there is intelligent control, connect the signal wire;

Step 6: Install the lamp body into the opened hole (see Figure 5 below);

Step 7: Before powering on, please ensure that the wiring is correct and that the light will not loosen.

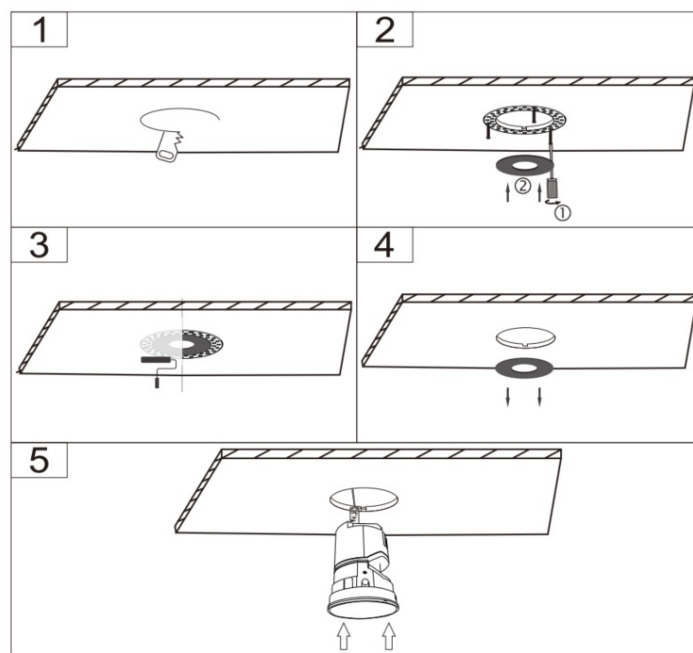


Figure 5

◆◆ Disassembly

Warning: Before performing any disassembly procedures on the device, it is crucial to disconnect the device from all voltage sources. This step is necessary to ensure the safety of the technician and prevent any potential damage to the device.

◆◆ Packing List

- Spotlight*1

- Driver*1(according to the order situation)

Note: After unpacking, please check if the product and the parts are complete.

◆◆ Copyright Statement

HDL has all the intellectual property rights to this document and contents thereof. Reproduction or distribution for third parties are prohibited without written authorization from HDL. Any infringement of HDL's intellectual property rights will be investigated the legal liability.

The contents of this document will be updated as the updates of product versions or other reasons. Unless otherwise agreed upon, this document is to be used as a guidance only. All the statements, information and recommendations in this document makes no warranty expressed or implied.

© 2025 HDL Automation Co., Ltd. All rights reserved.

Update History:

The form below contains the information of every update. The latest version contains all the updates of all former versions.

Version	Update Information	Date
V1.0	Initial release	August 1, 2025

◆◆ Technical Support

E-mail: hdltickets@hdlautomation.com

Website: <https://www.hdlautomation.com>