

Fangzhi 3.0 Non-Smart Panel datasheet

Instruction Manual



FZ-Mp^{***}.18

Before using this product, please read this manual carefully and keep it properly!

Document Version: C

◆◆ Overview

To provide users with better smart home solutions, Fangzhi 3.0 comes with various non-smart products for solution design.

The product list is as follows:

No.	Product Name	Model No.
1	Fangzhi 3.0 1-Button Switch	MPMZ-1R-NP.17
2	Fangzhi 3.0 2-Button Switch	MPMZ-2R-NP.17
3	Fangzhi 3.0 3-Button Switch	MPMZ-3R-NP.17
4	Fangzhi 3.0 1-Port Telephone Wall Jack	MPPZ-1T-NP.18
5	Fangzhi 3.0 TV and Ethernet Outlet	MPVZ-CE-NP.18
6	Fangzhi 3.0 1-Port Cable TV Wall Outlet	MPVZ-1C-NP.18
7	Fangzhi 3.0 1-Port Ethernet Wall Outlet	MPEZ-1E-NP.18
8	Fangzhi 3.0 2-Port Ethernet Wall Outlet	MPEZ-2E-NP.18
9	Fangzhi 3.0 TEL and Ethernet Outlet	MPPZ-TE-NP.18
10	Fangzhi 3.0 Induction Floor Light Panel	MPLZ-FLS-NP.17
11	Fangzhi 3.0 Emergency Panel	MPUZ-1EC-NP.17

Main functions:

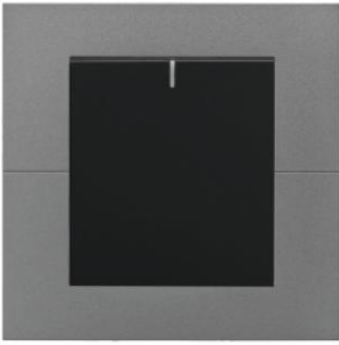
1. Signal Panel:

- TV Wall Outlet provides a coaxial cable signal interface for transmitting signals to TV equipment;
- TEL Outlet provides Cat3 telephone signal interface for transmitting signals to telephone devices;
- Ethernet Wall Outlet provides Cat5e network signal interfaces for transmitting signals to network devices;
- TV, telephone and Ethernet panels are paired together on a panel, providing corresponding signal interfaces for the combined devices to transmit signals.

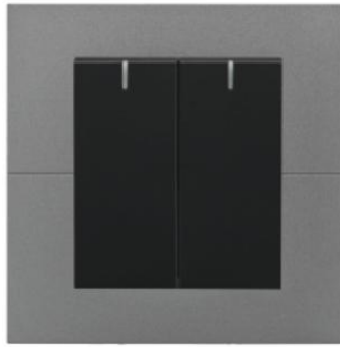
2. Others:

- Button Rocker Switch and Button Momentary Switch can be used to enable on/off control of related electrical equipment;
- Induction Floor Light Panel 2.1 achieving night light function;
- Emergency Panel is used to warn of danger or seek help, which can be released by resetting the key and button can be reset.

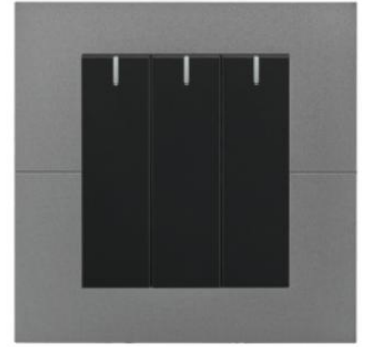
◆◆ Appearance



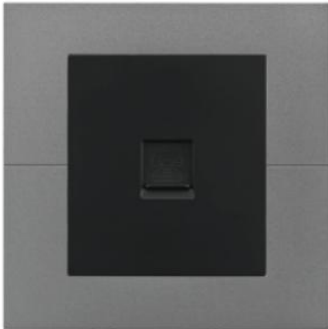
1-Button Switch



2-Button Switch



3-Button Switch



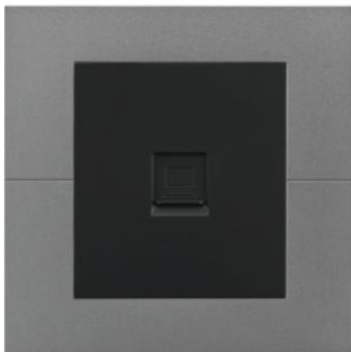
1-Port Telephone Wall Jack



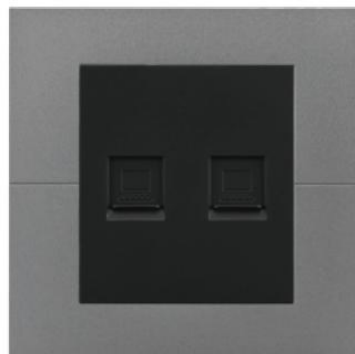
TV and Ethernet Outlet



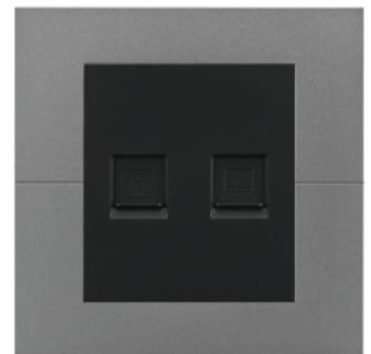
1-Port Cable TV Wall Outlet



1-Port Ethernet Wall Outlet



2-Port Ethernet Wall Outlet



TEL and Ethernet Outlet



Induction Floor Light Panel



Emergency Panel

◆ ◆ Technical Data

1. Signal Panel

Item	Parameter
Product type	TV Wall Outlet(Coaxial F connector)
Communication type	Unshielded Cat3e cable(TEL Outlet); Unshielded Cat6 cable(Ethernet Wall Outlet)
Wiring type	No wiring module, including protective doors (TEL, Ethernet panel)
Working temperature	-5°C~45°C
Working relative humidity	≤90%RH, non-condensed
Storage temperature	-20°C~60°C
Storage relative humidity	≤93%RH

2. Socket

2.1. Emergency Panel

Item	Parameter
Communication	Passive dry contact
Working temperature	-5°C~45°C
Working relative humidity	≤90%RH, non-condensed
Storage temperature	-20°C~60°C
Storage relative humidity	≤93%RH

2.2. 1-Button Switch/2-Button Switch/3-Button Switch

Item	Parameter
Rated voltage	250V ~, 50/60Hz
Maximum current	10A/CH
Working temperature	-5°C~45°C
Working relative humidity	≤90%RH, non-condensed
Storage temperature	-20°C~60°C
Storage relative humidity	≤93%RH

2.3. Induction Floor Light Panel

Item	Parameter
Rated voltage	220V ~, 50/60Hz
Power	0.75W
Working temperature	-5°C~45°C
Working relative humidity	≤90%RH, non-condensed
Storage temperature	-20°C~60°C
Storage relative humidity	≤93%RH

◆ Specifications

Item	Parameter
Dimensions (W X H X D)	86 x 86 mm. The side width is shown in the following figures
Housing material	Flame retardant PC
Installation	86-Type wall box
IP degree (compliant with EN 60529)	IP20



1-Button Switch



2-Button Switch



3-Button Switch



1-Port Telephone Wall Jack



TV and Ethernet Outlet



1-Port Cable TV Wall Outlet



1-Port Ethernet Wall Outlet



2-Port Ethernet Wall Outlet



TEL and Ethernet Outlet



Induction Floor Light Panel



Emergency Panel

◆ ◆ Safety Precaution

Danger:

Please do not privately disassemble or replace any parts of the product. Otherwise, it may cause mechanical fault, electric shock, fire or personal injuries.

Warning:

- The installation and testing for the product must be carried out by HDL Automation Co., Ltd. (hereinafter referred to as HDL) or its appointed service agencies. The electric construction shall comply with local laws and safety regulations.
- HDL will not be responsible for any consequence caused by the inexpert or faulty installation and wiring methods, which are not in accordance with the instructions contained in this datasheet.
- Please contact HDL after-sales departments or our designated service agencies for your maintenance service. Product failures caused by private disassembly are not subject to the warranty.
- For permanently connected equipment, a double-pole switch that meets standard requirements should be installed in the electrical facilities of the building.

Caution :

- Before performing any installation or disassembly procedures on the device, it is crucial to disconnect the device from all voltage sources. This step is necessary to ensure the safety of the technician and prevent any potential damage to the device.

- This device must be installed with a wall box.
- To protect the device and load, it is recommended to connect one 10A circuit breaker to each channel.
- Do not use corrosive liquid to wipe the device body, especially the interface, so to avoid damage to the device. Do not wipe the device with a damp cloth.
- Before performing any maintenance or cleaning procedures on the device, it is imperative to disconnect the device from all voltage sources. This precautionary measure is necessary in order to prevent electric leakage and the risk of electric shock.

◆ ◆ Wiring



1-Button Switch



2-Button Switch



3-Button Switch



1-Port Telephone Wall Jack



TV and Ethernet Outlet



1-Port Cable TV Wall Outlet



1-Port Ethernet Wall Outlet



2-Port Ethernet Wall Outlet



TEL and Ethernet Outlet



Induction Floor Light Panel



Emergency Panel

◆ ◆ Installation

- **Warning:** Before installation, please cut off the power supply, it is strictly prohibited to operate with electricity.
- **Note:** Before installation, if the bracket has not been separated from the panel assembly, please refer to the disassembly instructions.
- **Caution:** Disconnect the power supply before installation and do not operate with electricity.

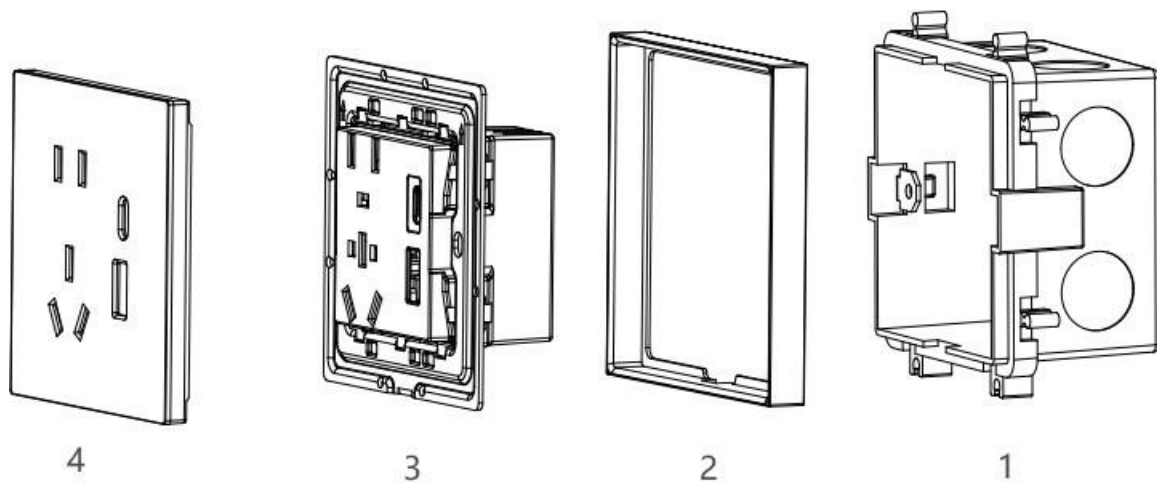
Step 1. Make an opening in the wall to mount the wall box into it.

Step 2. Stick the frame onto the wall and align the opening to the wall box.

Step 3. Insert the power base into the frame, aim the screws on both sides of the base at the holes in the wall box, install them together and lock the screws.

Note: Only 86 type wall box with depth \geq 50mm is supported.

Step 4: Align the panel pins with the base holes, press gently and install on the base.



Multi-gang installation:

- Only supports horizontal installation;
- Horizontal installation supports up to 3 rows.

◆◆ Disassembly

Warning: Before performing any disassembly procedures on the device, it is crucial to disconnect the device from all voltage sources. This step is necessary to ensure the safety of the technician and prevent any potential damage to the device.

Step 1. It is recommended to use a screwdriver to pry the panel open from the bottom.

Step 2. To remove the panel and power base, please refer to the section Installation and do it reversely.

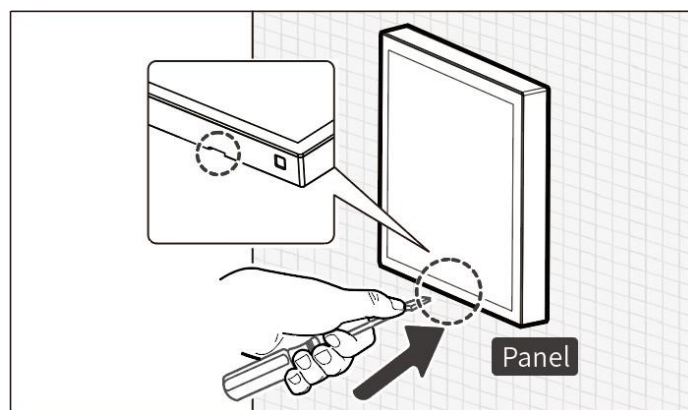


Figure 8

◆◆ Packing List

◆ ◆ Copyright Statement

HDL has all the intellectual property rights to this document and contents thereof. Reproduction or distribution for third parties are prohibited without written authorization from HDL. Any infringement of HDL’s intellectual property rights will be investigated the legal liability.

The contents of this document will be updated as the updates of product versions or other reasons. Unless otherwise agreed upon, this document is to be used as a guidance only. All the statements, information and recommendations in this document makes no warranty expressed or implied.

© 2025 HDL Automation Co., Ltd. All rights reserved.

Update History:

The form below contains the information of every update. The latest version contains all the updates of all former versions.

Version	Update Information	Date
V1.0	Initial release	April 30, 2025
V1.1	Update product list	Sept. 5, 2025

◆ ◆ Technical Support

E-mail: hdltickets@hdlautomation.com

Website: <https://www.hdlautomation.com>